

# IDDP Information for 2020 Spring Semester

**1. Application Deadline: Dec. 20<sup>th</sup>(Fri), 2019**

**2. Schedule**

Contents	Date	Remarks
<b>Application Deadline</b>	<b>Dec. 20, 2019</b>	
Documents Screening by the applying Department	Dec. 23 ~ Dec. 27, 2019	
Admissions Announcement	Dec. 31, 2019	
Delivery of Admissions Documents	Jan. 08, 2020	Certificate of Admission and Registration Information
Submission of Additional Certificates	Jan. 31, 2020	Certificate of 'High School Graduation Examination'
Payment of Tuition Fee	Beginning of February	To the designated bank, in person
Class Registration	Feb. 12, 2020	On-line registration
Opening of Semester	Mar. 02, 2020	Spring Semester, 2020

**3. International Dual Degree Program (IDDP) Period at JBNU**

- The regular IDDP period is 2 years. If IDDP students are unable to complete the required credits for graduation within the above period, he/she can choose a suitable university for graduation requirements to extend the period.
- The entire enrollment period cannot exceed twice the regular IDDP period. In other words, IDDP students must graduate within 4 years.
- It is strongly recommended for students to follow the course major of their home university.

**4. IDDP Admission Criteria**

- Students who have completed 2 years(4 semesters) at home university and have obtained half of the graduation credits of the selected academic department from CBNU.
- Students with an TOPIK certificate of Grade 4 or higher
- Students with the home university president's recommendation
- Students who have met the IDDP graduation requirements at their home university

## 5. IDDP Majors at JBNU

College	Department
Global Frontier	School of International Engineering and Science
	School of International Studies
Engineering	Architectural Engineering
	Division of Mechanical System Engineering (Applied Mechanical Engineering / Precision Mechanical Engineering)
	Mechanical Engineering
	Division of Mechanical Design Engineering (Mechanical Design Engineering Major)
	Division of Mechanical Design Engineering (Nano-Bio Mechanical System Engineering Major)
	Urban Engineering
	Division of Biomedical Engineering
	Industrial and Information Systems Engineering
	Division of Convergence Technology Engineering (IT Convergence Mechatronics Engineering Major)
	Division of Civil/Environmental/Mineral Resources and Energy Engineering (Mineral Resources and Energy Engineering Major)
	Division of Civil/Environmental/Mineral Resources and Energy Engineering (Civil Engineering Major)
	Division of Civil/Environmental/Mineral Resources and Energy Engineering (Environmental Engineering Major)
	Aerospace Engineering
Agriculture & Life Science	Division of Agricultural Economics and Food Marketing(Agricultural Economics)
	Division of Agricultural Economics and Food Marketing(Food Marketing)
	Animal Biotechnology
	Animal Science
	Wood Science and Technology
	Horticulture
	Crop Science and Biotechnology
	Landscape Architecture
	Rural Construction Engineering
Social Science	Social Welfare
	Sociology
	Journalism & Communications
	Psychology
	Political Science & Diplomacy
	Public Administration
Commerce	Business Administration
	Accounting
	Economics
	International Trade

College	Department
Human Ecology	Fashion Design
Arts	Dance
	Fine Arts
	Industrial Design
	Korean Music
Humanities	Archaeology & Cultural Anthropology
	Korean Language and Literature
	German Studies
	Library & Information Science
	English Language and Literature
	Japanese Studies
Natural Science	Science Studies
	Physics
	Semiconductor Science & Technology
	Division of Life Sciences(Molecular Biology Major)
	Division of Life Sciences(Life Sciences Major)
	Sports Science
	Earth & Environmental Sciences
Environmental & Bio Resource	Ecology Landscape Architecture Design

## 6. IDDP Graduation Requirements of JBNU

University	Field	Credits		Note
Home Univ.	Transferred Credits	65 credits	70 credits	
JBNU	Preparatory courses	26~34 credits		- The number of required hours may vary according to the major. - Period of study: 2 years
	Major	36~44 credits		
<b>Total</b>		<b>130 credits</b>	<b>140 credits</b>	

## 7. Policy of Credit Earning at JBNU

- Credits earned at the home university may count as a half of the graduation requirements of CBNU.
- IDDP students must follow the CBNU regulations while studying at CBNU.
- IDDP students must satisfy the graduation requirements of both the home university and CBNU by completing the curriculum for each major.
- Graduation decisions will be made when the final semester grade is confirmed.
- The IDDP Bachelor's Degree will be conferred by each university when graduation requirements for each university are completed.

- IDDP students must be registered as regular students at their home university while studying at JBNU.

## 8. Tuition Fee at JBNU

※ The following fees are for Fall semester in 2019.

(Unit: KRW)

College	Major	Tuition Fee
School of International Studies	Common	1,991,500
School of International Engineering Science	Common	2,670,500
Engineering	Common	2,670,500
Agriculture & Life Science	Common	2,497,000
Social Sciences	Common	1,991,500
Commerce	Common	1,991,500
Human Ecology	Common	2,497,000
Arts	Common	2,743,500
Humanities	Common	1,991,500
Natural Sciences	Common	2,497,000
Environmental and Bioresource Sciences	Common	2,497,000

- The above fee table is subject to change every year..

## 9. Scholarships

### A. IDDP Scholarships

Full tuition and dormitory fee will be waived during the regular IDDP period(4 semesters) up to 2 students per each year.

※ Student must obtain TOPIK Grade 4 certification, apply for student health insurance, and maintain a GPA of **2.75** or higher to be eligible for the forementioned all scholarships.

### B. Refund Policy

- Scholarship applicants must return the full amount of their scholarship when they quit their studies except there are occurrences of natural disasters, death or disease (in the presence of proof).

## 10. Required Documents

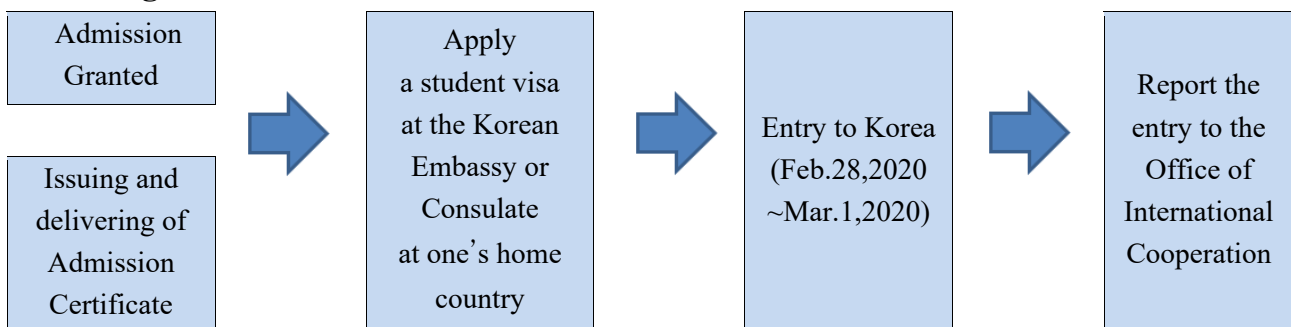
- ※ All documents must be written in Korean or English, except for the Study Plan (Korean)
- ※ Any documents written in a language other than Korean or English must be translated into Korean or English. There is no need to submit a notarization.
- ※ All documents must be submitted by **Jun.20<sup>th</sup>, 2019.**
- IDDP Application Form (Form Attached)
- Study Plan (Form Attached, in Korean Language Handwriting only)
- Letter of Recommendation from Home University
- Letter of Recommendation from a professor of the applicant's department
- Certificate of Enrollment
- Official Transcript
- Certificate of Korean Language Proficiency (TOPIK) Grade 4 or higher
- Photocopy of Passport

- 3 photos (3.5cm×4.5cm) - Please write your name on the back.
- High school Graduation Certificate
- Additional Document of High school Graduation
  - A) Apostille Convention Countries : Graduation Certificate accredited by Apostille
  - B) Apostille Non-Convention Countries : Graduation Certificates approved by the Korean embassy in your homeland or the Embassy of your country stationed in Korea.
  - C) Chinese students :
    - 1) Copy of High school Graduation Certificate
    - 2) an English certificate of ‘High School Graduation Examination’ issued by the China Academic Degrees & Graduate Education Information(<http://www.chinadegrees.cn>) or Confucius Institute in Seoul(CIS, <http://www.cis.or.kr>), **or** an English certificate of ‘Verification Report of China Secondary Education Qualification’ issued by the China Higher Education Student Information & Career Center(CHESICC, <http://www.chsi.com.cn>)
    - ※ If an issue of the verification is not yet complete at the time of applying, applicants must submit original copies of graduation certificates/transcripts and the translations along with other required documents. Then applicants must submit the English certificate of High School Graduation Examination no later than Jan.31<sup>st</sup>,2020.
    - ※ Failure to do so will cause your admission cancelled.
- An original copy of the Proof of International Student Insurance Policy (After applying, submit 1/4 of the semester period)
  - ※ Failure to submit the Proof of International Student Insurance Policy will prevent scholarship candidates from receiving a scholarship the following semester.

## 11. Tuition Fee Payment

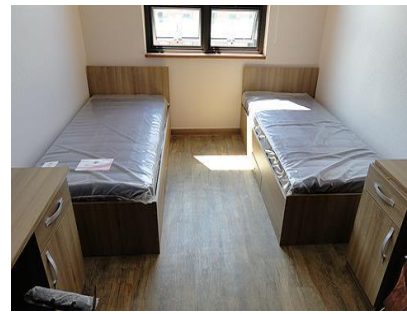
- Period: **Feb., 2020**(We will inform you the correct date later.)
- Location: Any branches of JB Bank or NH Bank in Korea
- If the tuition fee is not paid prior to the deadline, the admission will be cancelled automatically.
- If you are not able to enter Korea before the due date, a representative must pay the tuition fee in Korea.
- We will notify the detailed Registration Information to the successful candidates after the admission announcement.

## 12. Immigration Procedures after Admission



### 13. Others

- If IDDP students quit the program at any time before completion, they must go back to their home country immediately.
- JBNU will send an official transcript every semester to the home university.
- IDDP students must purchase **medical insurance** while studying at JBNU. (Fees may vary from approx. 110,000 KRW a year and coverage differs from various insurance companies.)
- **JBNU Residential Hall**
  - Two persons share a room.
  - Serving 3 meals a day except Saturdays and Sundays
  - Each room is furnished with a desk, chair, wardrobe, bed, shoe rack, bookshelf, Internet, bathroom, shower room, phone, desk lamp, etc.
  - ※ You need to provide your own blanket and pillows, as well as toiletry (soap, towel, etc.)
  - Common Facilities: lounge, seminar room, reading room, computer room, training room, AV room
  - Amenities: laundry room (coin operated), dining hall, convenience store (CVS), stationery store, cafe, etc.
  - Website: <http://likehome.jbnu.ac.kr>



- Office: +82-63-270-2184
- E-mail: [iddpasia@jbnu.ac.kr](mailto:iddpasia@jbnu.ac.kr)